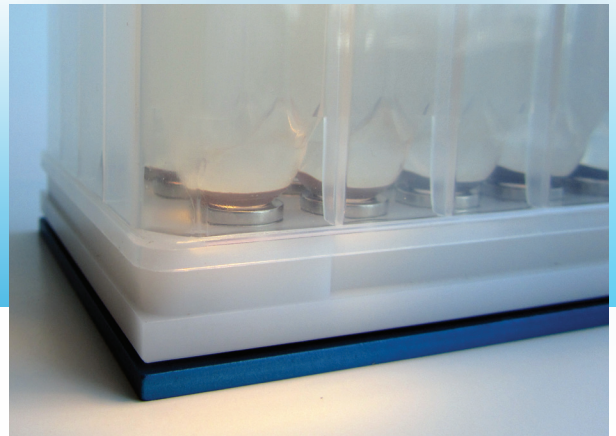


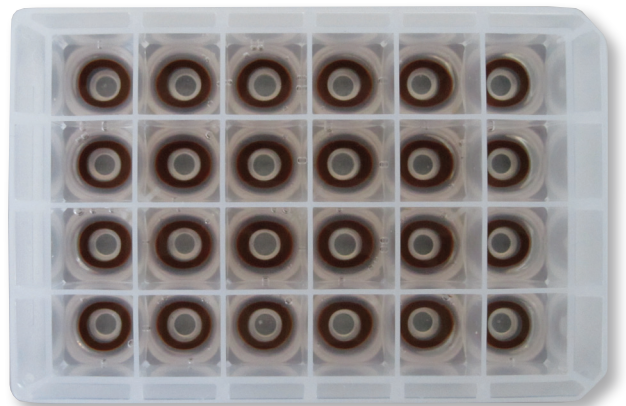
# MagPlate24

## 24-well Magnet Plate



### Double Ring Configuration... Maximum Sample Recovery

Compare Alpaqua's 24-well magnet plate to others and you'll see we run rings around our competition! Alpaqua offers the only 24-well magnet plate with NdFeB ring-based magnets and patented spring cushion technology.\* This combination enables maximum bead capture and complete aspiration of supernatants and wash solutions, while eliminating costly tip crashes. Our magnet plates are optimized for robotic access and comply with SBS footprint standards for maximum liquid handler and stacker compatibility.



*Highly efficient capture of magnet beads in an outer ring formation for automation-friendly separations using the Alpaqua MagPlate24 and a 24-well Whatman™ 10mL UniPlate™.*

### Common Applications

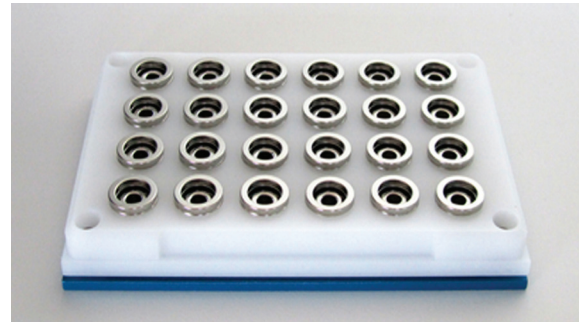
- Genomic DNA Purification
- Large Volume Nucleic Acid Purification
- Nucleic Acid Purification from Whole Blood

# MagPlate24

With Integrated Spring Cushion Technology

## Plate Features & Benefits

- Unique ring structure enables rapid magnetic bead separation in up to 10mL sample volumes
- Strong NdFeB magnets allow for highly efficient capture of magnet beads from viscous solutions
- Compatible with common magnetic bead chemistries and protocols for product and application flexibility
- Integrated spring cushion technology for precision pipetting and maximum sample recovery



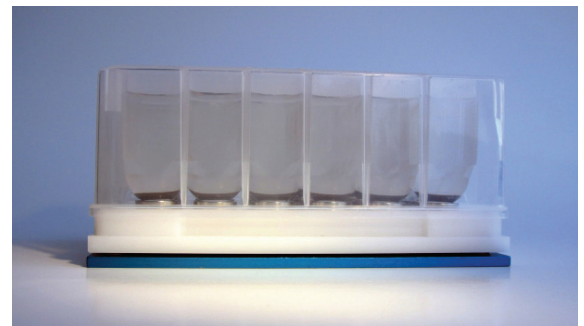
Alpaqua's MagPlate24 contains double ring architecture and spring cushion technology.

## Why do I need Spring Cushion Technology?

Microplates with integrated spring cushion technology give way when tips come in contact with a well bottom, thus compensating for physical tolerances between labware and pipettors that can compromise precision aspiration.

Spring Cushion Technology:

- Protects instruments & consumables
- Improves pipetting consistency
- Maximizes usage of reagents & samples
- Minimizes tip vacuum & head contamination



Side view of a Whatman UniPlate atop the Alpaqua MagPlate24 shown with 10mL of separated magnetic bead solution.

## Ordering Information

Buy online at [www.alpaqua.com/store](http://www.alpaqua.com/store), or place your order by phone, fax, or email at [sales@alpaqua.com](mailto:sales@alpaqua.com).



### MagPlate24

The Alpaqua 24-well magnet plate contains integrated spring cushion technology and a unique ring structure. It is designed for use with 24-well large volume (10mL) Whatman UniPlates.

Product Name	Description	Catalog #
MagPlate24	24-well Magnet Plate	A000270

Tel: (800) 690-1620  
Outside US: +1 (978) 878-9489  
Fax: (978) 865-9499  
[www.alpaqua.com](http://www.alpaqua.com)